

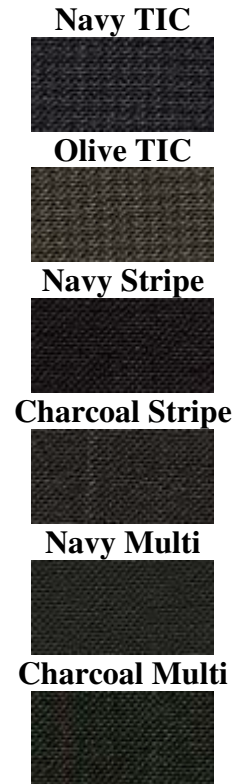


- Two Button
- Center Vent
- Flap Pockets
- Notched Lapel
- 100% Wool

### Suit Separates

**Available in these sizes**

Regular	Long	Short	X Long
36-60	38-60	36-50	42-60

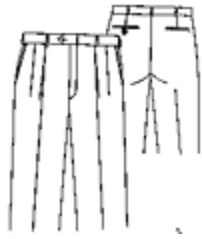


- Three Button
- Non-Vented
- Flap Pockets
- Notched Lapel
- 100% Wool

**Available in these sizes**

Regular	Long	Short	X Long
38-60	40-60	36-50	44-60

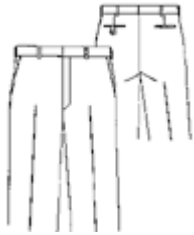




- Pleated front
- Lined to knee
- 100% Wool

**Available in these sizes**

Regular	Long
28-60	32-60



- Plain front
- Lined to knee
- 100% Wool

**Available in these sizes**

Regular
38-60

